

# Chem-Impex International, Inc.

---

**Tel:** (630) 766-2112

**E-mail:** sales@chemimpex.com

**Shipping and Correspondence:**

935 Dillon Drive

Wood Dale, IL 60191

**Fax:** (630) 766-2218

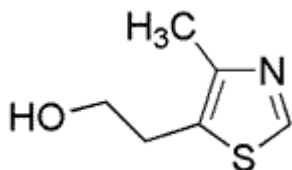
**Web site:** www.chemimpex.com

**Manufacturing site:**

825 Dillon Drive

Wood Dale, IL 60191

---



## Product Specifications

<b>Catalogue Number</b>	34934
<b>Product</b>	<b>4-Methyl-5-thiazoleethanol (Milky)</b> 5-(2-Hydroxyethyl)-4-methylthiazole Sulfurol
<b>CAS Number</b>	137-00-8
<b>Molecular Formula</b>	C <sub>6</sub> H <sub>9</sub> NOS
<b>Molecular Weight</b>	143.21

---

<b>Appearance</b>	Colorless to pale yellow liquid that may darken with age
<b>Odor</b>	Milky odor
<b>Flash Point</b>	> 93 °C
<b>Specific Gravity</b>	1.196 - 1.210 at 25 °C
<b>Refractive Index</b>	n <sub>20/D</sub> 1.548 - 1.552
<b>Purity by GC</b>	99 - 100%
<b>Grade</b>	FG, KOSHER, FEMA 3204
<b>Storage</b>	Store at RT

**For Laboratory Use Only**