

Chem-Impex International, Inc.

Tel: (630) 766-2112

E-mail: sales@chemimpex.com

Shipping and Correspondence:

935 Dillon Drive

Wood Dale, IL 60191

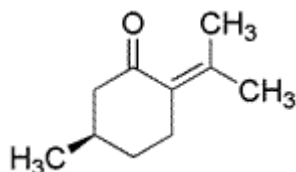
Fax: (630) 766-2218

Web site: www.chemimpex.com

Manufacturing site:

825 Dillon Drive

Wood Dale, IL 60191



Product Specifications

Catalogue Number	34862
Product	(R)-(+)-Pulegone (R)-p-Menth-4(8)-en-3-one (R)-2-Isopropylidene-5-methylcyclohexanone
CAS Number	89-82-7
Molecular Formula	C ₁₀ H ₁₆ O
Molecular Weight	152.23

Appearance	Slightly yellow to yellow liquid
Odor	To pass test
Flash Point	89 °C
Specific Gravity	0.932 - 0.938 at 25 °C
Refractive Index	n ₂₀ /D 1.485 - 1.490
Optical Rotation	[α] _D ²⁵ = 20 - 30 °
Purity by GC	90 - 100%
Grade	Natural, FG, KOSHER, FEMA 2963
Storage	Store at RT

For Laboratory Use Only