

# Chem-Impex International, Inc.

---

**Tel:** (630) 766-2112

**E-mail:** sales@chemimpex.com

**Shipping and Correspondence:**

935 Dillon Drive

Wood Dale, IL 60191

**Fax:** (630) 766-2218

**Web site:** www.chemimpex.com

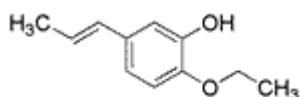
**Manufacturing site:**

825 Dillon Drive

Wood Dale, IL 60191

---

## Product Specifications



<b>Catalogue Number</b>	34852
<b>Product</b>	<b>Propenyl guaethol</b> 2-Ethoxy-5-(1-propenyl)phenol 1-Ethoxy-2-hydroxy-4-(1-propenyl)benzene
<b>CAS Number</b>	94-86-0
<b>Molecular Formula</b>	C <sub>11</sub> H <sub>14</sub> O <sub>2</sub>
<b>Molecular Weight</b>	178.23

---

<b>Appearance</b>	White to pale yellow crystalline powder
<b>Odor</b>	vanilla-like odor
<b>Melting Point</b>	85 - 88 °C
<b>Infrared Spectrum</b>	Conforms to structure
<b>Residue On Ignition</b>	≤ 0.1%
<b>Purity by GC</b>	≥ 99%
<b>Grade</b>	FG, KOSHER, FEMA 2922
<b>Storage</b>	Store at RT

**For Laboratory Use Only**