

# Chem-Impex International, Inc.

---

**Tel:** (630) 766-2112

**E-mail:** sales@chemimpex.com

**Shipping and Correspondence:**

935 Dillon Drive

Wood Dale, IL 60191

**Fax:** (630) 766-2218

**Web site:** www.chemimpex.com

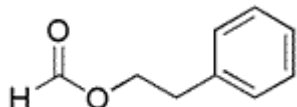
**Manufacturing site:**

825 Dillon Drive

Wood Dale, IL 60191

---

## Product Specifications



<b>Catalogue Number</b>	34817
<b>Product</b>	<b>Phenethyl formate</b> 2-Phenylethyl formate Phenethyl formate
<b>CAS Number</b>	104-62-1
<b>Molecular Formula</b>	C <sub>9</sub> H <sub>10</sub> O <sub>2</sub>
<b>Molecular Weight</b>	150.18

---

<b>Appearance</b>	Colorless liquid
<b>Odor</b>	Powerful, green-herbaceous, rosy odor
<b>Flash Point</b>	91 °C
<b>Specific Gravity</b>	1.058 - 1.066 at 25 °C
<b>Refractive Index</b>	n <sub>20</sub> /D 1.505 - 1.509
<b>Acid value</b>	0 - 3 mg KOH/g
<b>Purity by GC</b>	96 - 100%
<b>Grade</b>	FG, KOSHER, FEMA 2864
<b>Storage</b>	Store at RT

**For Laboratory Use Only**