

Chem-Impex International, Inc.

Tel: (630) 766-2112

E-mail: sales@chemimpex.com

Shipping and Correspondence:

935 Dillon Drive

Wood Dale, IL 60191

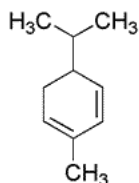
Fax: (630) 766-2218

Web site: www.chemimpex.com

Manufacturing site:

825 Dillon Drive

Wood Dale, IL 60191



Product Specifications

Catalogue Number	34799
Product	α-Phellandrene 2-Methyl-5-(1-methylethyl)-1,3-cyclohexadiene Menthadiene
CAS Number	99-83-2
Molecular Formula	C ₁₀ H ₁₆
Molecular Weight	136.24

Appearance	Colorless to slightly yellow liquid
Odor	Herbaceous odor, mint like background
Flash Point	46 °C
Specific Gravity	0.836 - 0.865 at 25 °C
Refractive Index	n ₂₀ /D 1.471 - 1.477
Optical Rotation	[α] _D ²⁵ = -80 to -150 °
Purity by GC	60 - 80%
Grade	Natural, FG, KOSHER, FEMA 2856
Storage	Store at RT

For Laboratory Use Only