

Chem-Impex International, Inc.

Tel: (630) 766-2112

E-mail: sales@chemimpex.com

Shipping and Correspondence:

935 Dillon Drive

Wood Dale, IL 60191

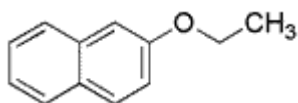
Fax: (630) 766-2218

Web site: www.chemimpex.com

Manufacturing site:

825 Dillon Drive

Wood Dale, IL 60191



Product Specifications

Catalogue Number	34700
Product	2-Ethoxynaphthalene Ethyl 2-naphthyl ether Neroline
CAS Number	93-18-5
Molecular Formula	C ₁₂ H ₁₂ O
Molecular Weight	172.23

Appearance	White to off-white crystals
Odor	Neroli-orange blossom odor
Melting Point	35 - 37 °C
Flash Point	> 93 °C
Grade	FG, KOSHER, FEMA 2768
Storage	Store at RT

For Laboratory Use Only