

Chem-Impex International, Inc.

Tel: (630) 766-2112

E-mail: sales@chemimpex.com

Shipping and Correspondence:

935 Dillon Drive

Wood Dale, IL 60191

Fax: (630) 766-2218

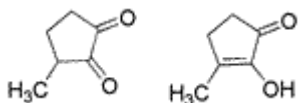
Web site: www.chemimpex.com

Manufacturing site:

825 Dillon Drive

Wood Dale, IL 60191

Product Specifications



Catalogue Number	34625
Product	Methyl cyclopentenolone 2-Hydroxy-3-methyl-2-cyclopenten-1-one 3-Methyl-2-cyclopentenon-2-ol
CAS Number	765-70-8
Molecular Formula	C ₆ H ₈ O ₂
Molecular Weight	112.13

Appearance	White to cream color crystalline powder or fine crystals
Odor	Nutty, maple-licorice odor
Melting Point	104 - 108 °C
Flash Point	> 93 °C
Purity by GC	99 - 100%
Grade	Natural, FG, KOSHER, FEMA 2
Storage	Store at RT

For Laboratory Use Only