

# Chem-Impex International, Inc.

---

**Tel:** (630) 766-2112

**E-mail:** sales@chemimpex.com

**Shipping and Correspondence:**

935 Dillon Drive

Wood Dale, IL 60191

**Fax:** (630) 766-2218

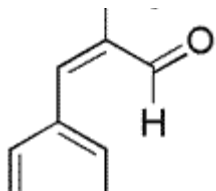
**Web site:** www.chemimpex.com

**Manufacturing site:**

825 Dillon Drive

Wood Dale, IL 60191

---



## Product Specifications

<b>Catalogue Number</b>	34623
<b>Product</b>	<b><math>\alpha</math>-Methylcinnamaldehyde</b> 2-Methyl-3-phenylpropenal 2-Methyl-3-phenylacrolein
<b>CAS Number</b>	101-39-3
<b>Molecular Formula</b>	C <sub>10</sub> H <sub>10</sub> O
<b>Molecular Weight</b>	146.19

---

<b>Appearance</b>	Clear pale yellow to yellow liquid
<b>Odor</b>	Powerful, warm, cinnamon, spicy, balsamic with a floral character odor
<b>Flash Point</b>	> 93 °C
<b>Specific Gravity</b>	1.035 - 1.039 at 25 °C
<b>Refractive Index</b>	n <sub>20</sub> /D 1.602 - 1.607
<b>Acid value</b>	0 - 5 mgKOH/g
<b>Assay</b>	97 - 100%
<b>Grade</b>	FG, KOSHER, FEMA 2697
<b>Storage</b>	Store at RT

**For Laboratory Use Only**