

# *Chem-Impex International, Inc.*

---

**Tel:** (630) 766-2112

**E-mail:** sales@chemimpex.com

**Shipping and Correspondence:**

935 Dillon Drive

Wood Dale, IL 60191

**Fax:** (630) 766-2218

**Web site:** www.chemimpex.com

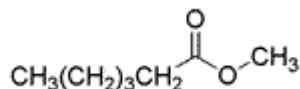
**Manufacturing site:**

825 Dillon Drive

Wood Dale, IL 60191

---

## *Product Specifications*



<b>Catalogue Number</b>	34620
<b>Product</b>	<b>Methyl hexanoate</b> Hexanoic acid methyl ester Methyl caproate
<b>CAS Number</b>	106-70-7
<b>Molecular Formula</b>	C <sub>7</sub> H <sub>14</sub> O <sub>2</sub>
<b>Molecular Weight</b>	130.19
<hr/>	
<b>Flash Point</b>	45 °C
<b>Specific Gravity</b>	0.880 - 0.889 at 25 °C
<b>Refractive Index</b>	n <sub>20</sub> /D 1.402 - 1.411
<b>Acid value</b>	0 - 1 mgKOH/g
<b>Purity by GC</b>	99 - 100%
<b>Grade</b>	Natural, KOSHER, FEMA 2708

**For Laboratory Use Only**