

# Chem-Impex International, Inc.

---

**Tel:** (630) 766-2112

**E-mail:** sales@chemimpex.com

**Shipping and Correspondence:**

935 Dillon Drive

Wood Dale, IL 60191

**Fax:** (630) 766-2218

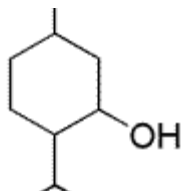
**Web site:** www.chemimpex.com

**Manufacturing site:**

825 Dillon Drive

Wood Dale, IL 60191

---



## Product Specifications

<b>Catalogue Number</b>	34585
<b>Product</b>	<b>(±)-Menthol, racemic</b> (±)-2-Isopropyl-5-methylcyclohexanol (±)-p-Menthan-3-ol
<b>CAS Number</b>	89-78-1
<b>Molecular Formula</b>	C <sub>10</sub> H <sub>20</sub> O
<b>Molecular Weight</b>	156.27

---

<b>Appearance</b>	Colorless to white fused-in crystals
<b>Odor</b>	Characteristic odor
<b>Flash Point</b>	> 93 °C
<b>Acid value</b>	0.00 - 0.28 mgKOH/g
<b>Optical Rotation</b>	[α] <sub>D</sub> <sup>25</sup> = -2 to 2 °
<b>Oxidizable Substances</b>	To pass test
<b>Residual Solvents</b>	To pass test
<b>Non-Volatile Matter</b>	Residue : 0.00 - 0.05%
<b>Related Substances</b>	Isomenthol : 0.0 - 0.6% Neoisomenthol : 0.0 - 0.3%
<b>Purity by GC</b>	99 - 100%
<b>Grade</b>	FG, KOSHER, FEMA 2665
<b>Storage</b>	Store at RT
<b>Additional Information</b>	Identification : To pass test Solidification point 1 : 27 - 28 °C Solidification point2 : 30.5 - 32.0 °C

**For Laboratory Use Only**