

Chem-Impex International, Inc.

Tel: (630) 766-2112

E-mail: sales@chemimpex.com

Shipping and Correspondence:

935 Dillon Drive

Wood Dale, IL 60191

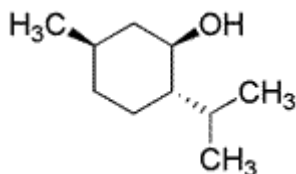
Fax: (630) 766-2218

Web site: www.chemimpex.com

Manufacturing site:

825 Dillon Drive

Wood Dale, IL 60191



Product Specifications

Catalogue Number	34584
Product	L-Menthol (-)- <i>p</i> -Menthan-3-ol (1 <i>R</i> ,2 <i>S</i> ,5 <i>R</i>)-2-Isopropyl-5-methylcyclohexanol
CAS Number	2216-51-5
Molecular Formula	C ₁₀ H ₂₀ O
Molecular Weight	156.27

Appearance	Colorless hexagonal crystals, usually needle like or a crystalline powder
Odor	Pleasant, peppermint like odor
Melting Point	41 - 44 °C
Optical Rotation	[α] _D ²⁰ = -45 to -51 °
Infrared Spectrum	Conforms to structure
Purity by GC	≥ 97%
Grade	FG, KOSHER, FEMA 2665
Storage	Store at RT

For Laboratory Use Only