

Chem-Impex International, Inc.

Tel: (630) 766-2112

E-mail: sales@chemimpex.com

Shipping and Correspondence:

935 Dillon Drive

Wood Dale, IL 60191

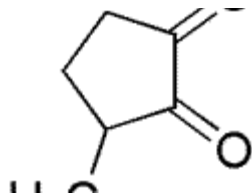
Fax: (630) 766-2218

Web site: www.chemimpex.com

Manufacturing site:

825 Dillon Drive

Wood Dale, IL 60191



Product Specifications

Catalogue Number	34570
Product	Methyl cyclopentenolone 3-Methylcyclopentane-1,2-dione 2-Hydroxy-3-methyl-2-cyclopenten-1-one
CAS Number	765-70-8
Molecular Formula	C ₆ H ₈ O ₂
Molecular Weight	112.13

Appearance	White to cream color crystalline powder or fine crystals
Odor	Characteristic nutty odor suggestive to maple licorice
Melting Point	104 - 108 °C
Flash Point	> 93 °C
Purity by GC	99 - 100%
Grade	FG, KOSHER, FEMA 2700
Storage	Store at RT

For Laboratory Use Only