

# Chem-Impex International, Inc.

---

**Tel:** (630) 766-2112

**E-mail:** sales@chemimpex.com

**Shipping and Correspondence:**

935 Dillon Drive

Wood Dale, IL 60191

**Fax:** (630) 766-2218

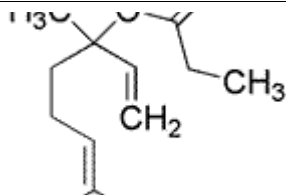
**Web site:** www.chemimpex.com

**Manufacturing site:**

825 Dillon Drive

Wood Dale, IL 60191

---



## Product Specifications

<b>Catalogue Number</b>	34541
<b>Product</b>	<b>Linalyl propionate</b>
<b>CAS Number</b>	144-39-8
<b>Molecular Formula</b>	C <sub>13</sub> H <sub>22</sub> O <sub>2</sub>
<b>Molecular Weight</b>	210.32

---

<b>Appearance</b>	Clear, colorless to pale yellow liquid
<b>Odor</b>	Lavender, citrus-bergamot, fruity odor
<b>Flash Point</b>	92 °C
<b>Specific Gravity</b>	0.893 - 0.902 at 25 °C
<b>Refractive Index</b>	n <sub>20</sub> /D 1.449 - 1.454
<b>Acid value</b>	0 - 1 mg KOH/g
<b>Purity by GC</b>	96 - 100%
<b>Grade</b>	FG, KOSHER, FEMA 2645
<b>Storage</b>	Store at RT

**For Laboratory Use Only**