

Chem-Impex International, Inc.

Tel: (630) 766-2112

E-mail: sales@chemimpex.com

Shipping and Correspondence:

935 Dillon Drive

Wood Dale, IL 60191

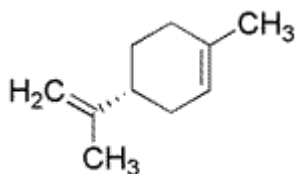
Fax: (630) 766-2218

Web site: www.chemimpex.com

Manufacturing site:

825 Dillon Drive

Wood Dale, IL 60191



Product Specifications

Catalogue Number	34528
Product	(R)-(+)-Limonene, sum of enantiomers (R)-(+)-4-Isopropenyl-1-methylcyclohexene (+)- <i>p</i> -Mentha-1,8-diene
CAS Number	5989-27-5
Molecular Formula	C ₁₀ H ₁₆
Molecular Weight	136.24

Appearance	Clear, colorless liquid
Odor	Citrus odor
Flash Point	45 °C
Specific Gravity	0.838 - 0.843 at 25 °C
Refractive Index	n ₂₀ /D 1.471 - 1.474
Optical Rotation	[α] ²⁵ _D = 96 - 105 °
Purity by GC	99 - 100%
Grade	Natural, FG, KOSHER, FEMA 2633
Storage	Store at RT
Additional Information	Flavor : To pass test

For Laboratory Use Only