

Chem-Impex International, Inc.

Tel: (630) 766-2112

E-mail: sales@chemimpex.com

Shipping and Correspondence:

935 Dillon Drive

Wood Dale, IL 60191

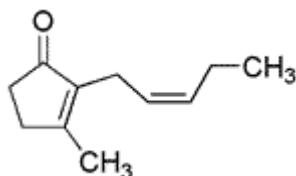
Fax: (630) 766-2218

Web site: www.chemimpex.com

Manufacturing site:

825 Dillon Drive

Wood Dale, IL 60191



Product Specifications

Catalogue Number	34470
Product	<i>cis</i>-Jasmone 3-Methyl-2-(2-pentenyl)-2-cyclopenten-1-one
CAS Number	488-10-8
Molecular Formula	C ₁₁ H ₁₆ O
Molecular Weight	164.24

Appearance	Clear, colorless to pale yellow liquid
Odor	Warm, spicy, floral odor
Flash Point	> 93 °C
Specific Gravity	0.938 - 0.942 at 25 °C
Refractive Index	n ₂₀ /D 1.497 - 1.501
Purity by GC	98 - 100%
Grade	KOSHER, FEMA 3196
Storage	Store at RT

For Laboratory Use Only