

# Chem-Impex International, Inc.

---

**Tel:** (630) 766-2112

**E-mail:** sales@chemimpex.com

**Shipping and Correspondence:**

935 Dillon Drive

Wood Dale, IL 60191

**Fax:** (630) 766-2218

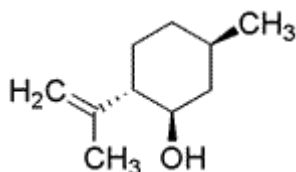
**Web site:** www.chemimpex.com

**Manufacturing site:**

825 Dillon Drive

Wood Dale, IL 60191

---



## Product Specifications

<b>Catalogue Number</b>	34457
<b>Product</b>	<b>(-)-Isopulegol</b> (1 <i>R</i> ,2 <i>S</i> ,5 <i>R</i> )-2-Isopropenyl-5-methylcyclohexanol (1 <i>R</i> ,3 <i>R</i> ,4 <i>S</i> )- <i>p</i> -Menth-8-en-3-ol
<b>CAS Number</b>	89-79-2
<b>Molecular Formula</b>	C <sub>10</sub> H <sub>18</sub> O
<b>Molecular Weight</b>	154.25

---

<b>Appearance</b>	Clear, colorless to pale yellow liquid
<b>Odor</b>	Rather harsh, camphoraceous and minty odor, with a roseleaf and geranium background
<b>Flash Point</b>	79 °C
<b>Specific Gravity</b>	0.904 - 0.913 at 25 °C
<b>Refractive Index</b>	n <sub>20</sub> /D 1.470 - 1.475
<b>Acid value</b>	0 - 1 mg KOH/g
<b>Optical Rotation</b>	[α] <sup>25</sup> <sub>D</sub> = -7 to 0 °
<b>Purity by GC</b>	95 - 100% (Sum of isomers)
<b>Grade</b>	FG, KOSHER, FEMA 2962
<b>Storage</b>	Store at RT
<b>Additional Information</b>	Aldehyde : 0 - 2%

**For Laboratory Use Only**