

Chem-Impex International, Inc.

Tel: (630) 766-2112

E-mail: sales@chemimpex.com

Shipping and Correspondence:

935 Dillon Drive

Wood Dale, IL 60191

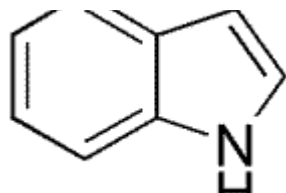
Fax: (630) 766-2218

Web site: www.chemimpex.com

Manufacturing site:

825 Dillon Drive

Wood Dale, IL 60191



Product Specifications

Catalogue Number	34393
Product	Indole 1 <i>H</i> -Benzo[b]pyrrole
CAS Number	120-72-9
Molecular Formula	C ₈ H ₇ N
Molecular Weight	117.15

Appearance	White crystalline
Odor	Unpleasant odor in high concentrations, but floral in higher dilution
Melting Point	52 - 53 °C
Purity by GC	≥ 99%
Grade	FG, KOSHER, FEMA 2593
Storage	Store at RT

For Laboratory Use Only