

# Chem-Impex International, Inc.

---

**Tel:** (630) 766-2112

**E-mail:** sales@chemimpex.com

**Shipping and Correspondence:**

935 Dillon Drive

Wood Dale, IL 60191

**Fax:** (630) 766-2218

**Web site:** www.chemimpex.com

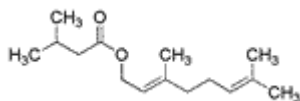
**Manufacturing site:**

825 Dillon Drive

Wood Dale, IL 60191

---

## Product Specifications



<b>Catalogue Number</b>	34287
<b>Product</b>	<b>Geranyl isovalerate, mixture of isomers</b>
<b>CAS Number</b>	109-20-6
<b>Molecular Formula</b>	C <sub>15</sub> H <sub>26</sub> O <sub>2</sub>
<b>Molecular Weight</b>	238.37

---

<b>Appearance</b>	Clear, colorless to pale yellow liquid
<b>Odor</b>	Fruity odor
<b>Flash Point</b>	> 93 °C
<b>Specific Gravity</b>	0.882 - 0.885 at 25 °C
<b>Refractive Index</b>	n <sub>20</sub> /D 1.452 - 1.455
<b>Acid value</b>	0 - 1 mg KOH/g
<b>Grade</b>	FG, KOSHER
<b>Storage</b>	Store at RT
<b>Additional Information</b>	Citronellyl isovalerate : 35 - 45% Geranyl isovalerate : 55 - 65%

**For Laboratory Use Only**