

Chem-Impex International, Inc.

Tel: (630) 766-2112

E-mail: sales@chemimpex.com

Shipping and Correspondence:

935 Dillon Drive

Wood Dale, IL 60191

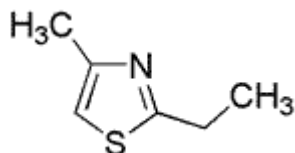
Fax: (630) 766-2218

Web site: www.chemimpex.com

Manufacturing site:

825 Dillon Drive

Wood Dale, IL 60191



Product Specifications

Catalogue Number	34205
Product	2-Ethyl-4-methylthiazole
CAS Number	15679-12-6
Molecular Formula	C ₆ H ₉ NS
Molecular Weight	127.21

Appearance	Water-white to amber liquid
Odor	Nutty, green pistachio odor
Flash Point	65 °C
Specific Gravity	1.021 - 1.031 at 25 °C
Refractive Index	n _{20/D} 1.501 - 1.511
Purity by GC	98 - 100%
Grade	FG, KOSHER, FEMA 3680
Storage	Store at RT

For Laboratory Use Only