

Chem-Impex International, Inc.

Tel: (630) 766-2112

E-mail: sales@chemimpex.com

Shipping and Correspondence:

935 Dillon Drive

Wood Dale, IL 60191

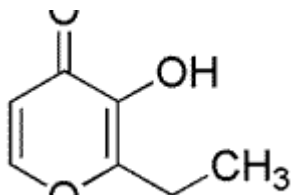
Fax: (630) 766-2218

Web site: www.chemimpex.com

Manufacturing site:

825 Dillon Drive

Wood Dale, IL 60191



Product Specifications

Catalogue Number	34185
Product	Ethyl maltol 2-Ethyl-3-hydroxy-4H-pyran-4-one
CAS Number	4940-11-8
Molecular Formula	C ₇ H ₈ O ₃
Molecular Weight	140.14

Appearance	White crystalline powder
Odor	Cotton candy odor
Melting Point	89 - 93 °C
Flash Point	> 93 °C
Purity by GC	99 - 100%
Grade	FG, KOSHER, FEMA 3487
Storage	Store at RT

For Laboratory Use Only