

# Chem-Impex International, Inc.

---

**Tel:** (630) 766-2112

**E-mail:** sales@chemimpex.com

**Shipping and Correspondence:**

935 Dillon Drive

Wood Dale, IL 60191

**Fax:** (630) 766-2218

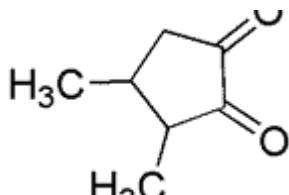
**Web site:** www.chemimpex.com

**Manufacturing site:**

825 Dillon Drive

Wood Dale, IL 60191

---



## Product Specifications

<b>Catalogue Number</b>	34122
<b>Product</b>	<b>3,4-Dimethyl-1,2-cyclopentadione</b> Caramel pentadione
<b>CAS Number</b>	13494-06-9
<b>Molecular Formula</b>	C <sub>7</sub> H <sub>10</sub> O <sub>2</sub>
<b>Molecular Weight</b>	126.15

---

<b>Appearance</b>	Yellow to beige crystalline powder
<b>Odor</b>	Food like, spicy, fruity odor
<b>Melting Point</b>	65 - 71 °C
<b>Flash Point</b>	> 93 °C
<b>Purity by GC</b>	97 - 100%
<b>Grade</b>	FG, KOSHER, FEMA 3268
<b>Storage</b>	Store at 0 - 8 °C

**For Laboratory Use Only**