

# Chem-Impex International, Inc.

---

**Tel:** (630) 766-2112

**E-mail:** sales@chemimpex.com

**Shipping and Correspondence:**

935 Dillon Drive

Wood Dale, IL 60191

**Fax:** (630) 766-2218

**Web site:** www.chemimpex.com

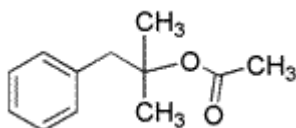
**Manufacturing site:**

825 Dillon Drive

Wood Dale, IL 60191

---

## Product Specifications



<b>Catalogue Number</b>	34107
<b>Product</b>	<b><math>\alpha,\alpha</math>-Dimethylphenethyl acetate</b> Acetic acid 1,1-dimethyl-2-phenylethyl ester Acetic acid $\alpha,\alpha$ -dimethylphenethyl ester
<b>CAS Number</b>	151-05-3
<b>Molecular Formula</b>	C <sub>12</sub> H <sub>16</sub> O <sub>2</sub>
<b>Molecular Weight</b>	192.25

---

<b>Appearance</b>	Colorless liquid; solidifies at room temperature
<b>Odor</b>	Sweet floral fruity rose green pear berry jasmin like odor
<b>Specific Gravity</b>	0.992 - 1.002 at 25 °C
<b>Refractive Index</b>	n <sub>25/D</sub> 1.488 - 1.493
<b>Acid value</b>	0 - 1 mg KOH/g
<b>Purity</b>	98 - 100%
<b>Grade</b>	FG, KOSHER, FEMA 2392
<b>Storage</b>	Store at RT

**For Laboratory Use Only**