

Chem-Impex International, Inc.

Tel: (630) 766-2112

E-mail: sales@chemimpex.com

Shipping and Correspondence:

935 Dillon Drive

Wood Dale, IL 60191

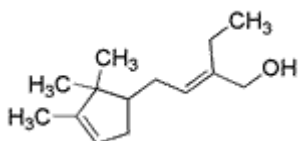
Fax: (630) 766-2218

Web site: www.chemimpex.com

Manufacturing site:

825 Dillon Drive

Wood Dale, IL 60191



Product Specifications

Catalogue Number	34061
Product	2-Ethyl-4-(2,2,3-trimethylcyclopent-3-en-1-yl)-
CAS Number	28219-61-6
Molecular Formula	C ₁₄ H ₂₄ O
Molecular Weight	208.34

Appearance	Colorless liquid
Odor	Characteristic strong odor
Flash Point	> 93 °C
Specific Gravity	0.911 - 0.919 at 25 °C
Refractive Index	n ₂₀ /D 1.484 - 1.490
Acid value	0 - 3 mg KOH/g
Optical Rotation	[α] ²⁰ _D = -5.0 to 0.0 °
Assay	95 - 100% (sum of isomers)
Storage	Store at RT

For Laboratory Use Only