

Chem-Impex International, Inc.

Tel: (630) 766-2112

E-mail: sales@chemimpex.com

Shipping and Correspondence:

935 Dillon Drive

Wood Dale, IL 60191

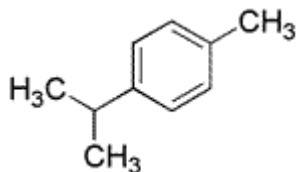
Fax: (630) 766-2218

Web site: www.chemimpex.com

Manufacturing site:

825 Dillon Drive

Wood Dale, IL 60191



Product Specifications

Catalogue Number	34053
Product	<i>p</i>-Cymene 4-Isopropyltoluene 4-Methylisopropylbenzene
CAS Number	99-87-6
Molecular Formula	C ₁₀ H ₁₄
Molecular Weight	134.22
<hr/>	
Appearance	Colorless to pale yellow liquid
Odor	Kerosene odor
Flash Point	51 °C
Specific Gravity	0.853 - 0.855 at 25 °C
Refractive Index	n ₂₀ /D 1.484 - 1.491
Purity by GC	97 - 100%
Grade	Natural, FG, KOSHER, FEMA 2356
Storage	Store at RT

For Laboratory Use Only