

# Chem-Impex International, Inc.

---

**Tel:** (630) 766-2112

**E-mail:** sales@chemimpex.com

**Shipping and Correspondence:**

935 Dillon Drive

Wood Dale, IL 60191

**Fax:** (630) 766-2218

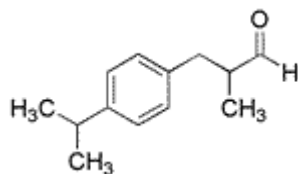
**Web site:** www.chemimpex.com

**Manufacturing site:**

825 Dillon Drive

Wood Dale, IL 60191

---



## Product Specifications

<b>Catalogue Number</b>	34045
<b>Product</b>	<b>2-Methyl-3-(p-isopropylphenyl)</b> 3-(4-Isopropylphenyl)isobutyraldehyde Cyclamen aldehyde
<b>CAS Number</b>	103-95-7
<b>Molecular Formula</b>	C <sub>13</sub> H <sub>18</sub> O
<b>Molecular Weight</b>	190.28

---

<b>Appearance</b>	Clear, colorless to pale yellow liquid
<b>Odor</b>	Strong flowery odor with lily character
<b>Flash Point</b>	88 °C
<b>Specific Gravity</b>	0.945 - 0.949 at 25 °C
<b>Refractive Index</b>	n <sub>20/D</sub> 1.503 - 1.507
<b>Assay</b>	Assay li : 95 - 100% Assay lii : 0 - 5% Assay (sum of isomers) : 98 - 100%
<b>Grade</b>	FG, KOSHER, FEMA 2743
<b>Storage</b>	Store at RT
<b>Additional Information</b>	Cyclamen Alcohol : 0.0 - 1.5%

**For Laboratory Use Only**