

Chem-Impex International, Inc.

Tel: (630) 766-2112

E-mail: sales@chemimpex.com

Shipping and Correspondence:

935 Dillon Drive

Wood Dale, IL 60191

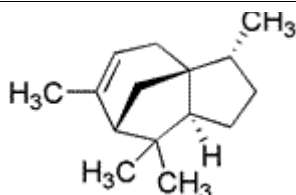
Fax: (630) 766-2218

Web site: www.chemimpex.com

Manufacturing site:

825 Dillon Drive

Wood Dale, IL 60191



Product Specifications

Catalogue Number	33938
Product	(-)-α-Cedrene sum of enantiomers (1 <i>S</i> ,2 <i>R</i> ,5 <i>S</i>)-2,6,6,8-Tetramethyltricyclo[5.3.1.0 ^{1.5}]undec-8-ene
CAS Number	469-61-4
Molecular Formula	C ₁₅ H ₂₄
Molecular Weight	204.35

Appearance	Pale yellow liquid
Odor	Cedar wood odor
Flash Point	> 93 °C
Specific Gravity	0.920 - 0.935 at 25 °C
Refractive Index	n ₂₀ /D 1.490 - 1.600
Purity by GC	95 - 100% (Sum of isomers)
Grade	Natural, KOSHER
Storage	Store at RT
Additional Information	Cedrene Alpha : 75 - 97%

For Laboratory Use Only