

Chem-Impex International, Inc.

Tel: (630) 766-2112

E-mail: sales@chemimpex.com

Shipping and Correspondence:

935 Dillon Drive

Wood Dale, IL 60191

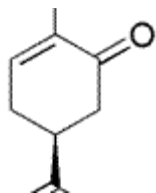
Fax: (630) 766-2218

Web site: www.chemimpex.com

Manufacturing site:

825 Dillon Drive

Wood Dale, IL 60191



Product Specifications

Catalogue Number	33920
Product	D-Carvone <i>p</i> -Mentha-6,8-dien-2-one (<i>S</i>)-5-Isopropenyl-2-methyl-2-cyclohexenone
CAS Number	2244-16-8
Molecular Formula	C ₁₀ H ₁₆ O
Molecular Weight	152.23

Appearance	Colorless to light yellow liquid
Odor	Caraway odor
Flash Point	> 93 °C
Specific Gravity	0.956 - 0.961 at 25 °C
Refractive Index	n ₂₀ /D 1.496 - 1.502
Optical Rotation	[α] _D ²⁵ = 50 - 60 °
Purity by GC	95.7 - 100.0%
Grade	Natural, FG, KOSHER, FEMA 2249
Storage	Store at RT

For Laboratory Use Only