

# Chem-Impex International, Inc.

---

**Tel:** (630) 766-2112

**E-mail:** sales@chemimpex.com

**Shipping and Correspondence:**

935 Dillon Drive

Wood Dale, IL 60191

**Fax:** (630) 766-2218

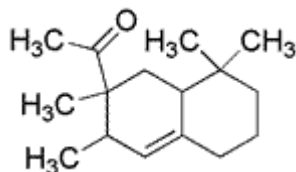
**Web site:** www.chemimpex.com

**Manufacturing site:**

825 Dillon Drive

Wood Dale, IL 60191

---



## Product Specifications

<b>Catalogue Number</b>	33813
<b>Product</b>	<b>1-(2,3,8,8-Tetramethyl-1,2,3,4,5,6,7,8-Isocyclemone E</b> Amberonne
<b>CAS Number</b>	54464-57-2
<b>Molecular Formula</b>	C <sub>16</sub> H <sub>26</sub> O
<b>Molecular Weight</b>	234.38

---

<b>Appearance</b>	Pale yellow
<b>Flash Point</b>	134 °C
<b>Refractive Index</b>	n <sub>20</sub> /D 1.497 - 1.501
<b>Purity by GC</b>	90 - 100%
<b>Grade</b>	KOSHER
<b>Storage</b>	Store at 0 - 8 °C
<b>Additional Information</b>	Relative density : D <sub>20</sub> /4 : 0.961 - 0.967 D <sub>25</sub> /25 : 0.959 - 0.965 Color hunter, L : 96 - 102 Color hunter, A : -5 to 0 Color hunter, B : 0 - 9

**For Laboratory Use Only**