

# Chem-Impex International, Inc.

---

**Tel:** (630) 766-2112

**E-mail:** sales@chemimpex.com

**Shipping and Correspondence:**

935 Dillon Drive

Wood Dale, IL 60191

**Fax:** (630) 766-2218

**Web site:** www.chemimpex.com

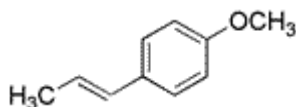
**Manufacturing site:**

825 Dillon Drive

Wood Dale, IL 60191

---

## Product Specifications



---

|                          |   |
|--------------------------|---|
| <b>Catalogue Number</b>  | 33794   |
| <b>Product</b>           | <b><i>trans</i>-Anethole</b><br><i>trans</i> - <i>p</i> -Methoxypropenylbenzene<br><i>trans</i> - <i>p</i> -Propenylanisole |
| <b>CAS Number</b>        | 4180-23-8   |
| <b>Molecular Formula</b> | C <sub>10</sub> H <sub>12</sub> O   |
| <b>Molecular Weight</b>  | 148.21  |
| <hr/>                    |   |
| <b>Appearance</b>        | White crystalline solid; colorless to faintly yellow liquid   |
| <b>Odor</b>              | Anise like odor   |
| <b>Flash Point</b>       | > 93 °C   |
| <b>Specific Gravity</b>  | 0.983 - 0.988 at 25 °C  |
| <b>Refractive Index</b>  | n <sub>20</sub> /D 1.557 - 1.562  |
| <b>Optical Rotation</b>  | [α] <sup>25</sup> <sub>D</sub> = -1.50 to +1.50 °   |
| <b>Purity by GC</b>      | 99 - 100%   |
| <b>Grade</b>             | Natural, FG, KOSHER, FEMA 2   |
| <b>Storage</b>           | Store at 0 - 8 °C   |

**For Laboratory Use Only**