

# Chem-Impex International, Inc.

---

**Tel:** (630) 766-2112

**E-mail:** sales@chemimpex.com

**Shipping and Correspondence:**

935 Dillon Drive

Wood Dale, IL 60191

**Fax:** (630) 766-2218

**Web site:** www.chemimpex.com

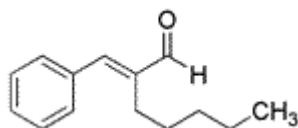
**Manufacturing site:**

825 Dillon Drive

Wood Dale, IL 60191

---

## Product Specifications



<b>Catalogue Number</b>	33788
<b>Product</b>	<b><math>\alpha</math>-Amylcinnamaldehyde</b> 2-Amyl-3-phenylacrylaldehyde 2-Amyl-3-phenyl-2-propenal
<b>CAS Number</b>	122-40-7
<b>Molecular Formula</b>	C <sub>14</sub> H <sub>18</sub> O
<b>Molecular Weight</b>	202.29

---

<b>Appearance</b>	Yellow liquid
<b>Odor</b>	Strong, floral, like jasmine on dilution, spicy odor
<b>Flash Point</b>	> 93 °C
<b>Specific Gravity</b>	0.963 - 0.968 at 25 °C
<b>Refractive Index</b>	n <sub>20</sub> /D 1.554 - 1.559
<b>Acid value</b>	0 - 5 mg KOH/g
<b>Purity by GC</b>	97 - 100%
<b>Grade</b>	FG, KOSHER, FEMA 2061
<b>Storage</b>	Store at RT

**For Laboratory Use Only**