

Chem-Impex International, Inc.

Tel: (630) 766-2112

E-mail: sales@chemimpex.com

Shipping and Correspondence:

935 Dillon Drive

Wood Dale, IL 60191

Fax: (630) 766-2218

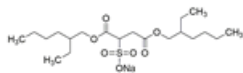
Web site: www.chemimpex.com

Manufacturing site:

825 Dillon Drive

Wood Dale, IL 60191

Product Specifications



Catalogue Number	33567
Product	Diocetyl sulfosuccinate sodium salt Docusate sodium Bis(2-ethylhexyl) sulfosuccinate sodium salt
CAS Number	577-11-7
Molecular Formula	C ₂₀ H ₃₇ NaO ₇ S
Molecular Weight	444.55

Appearance	White, wax like plastic solid
Clarity & Color	Clarity of solution : Dissolve 25 g in 100 mL of alcohol; the solution does not develop a haze within 24 hours.
Water Content (Karl Fisher)	≤ 2%
Related Substances	Limit of bis(2-ethylhexyl) maleate : ≤ 0.4%
Residue On Ignition	15.5 - 16.5%
Assay (anhydrous basis)	99.0 - 100.5%
Grade	Meets USP specification
Storage	Store at RT

For Laboratory Use Only