

Chem-Impex International, Inc.

Tel: (630) 766-2112

E-mail: sales@chemimpex.com

Shipping and Correspondence:

935 Dillon Drive

Wood Dale, IL 60191

Fax: (630) 766-2218

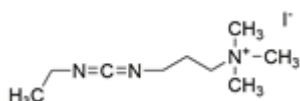
Web site: www.chemimpex.com

Manufacturing site:

825 Dillon Drive

Wood Dale, IL 60191

Product Specifications



Catalogue Number	33524
Product	1-[3-(Dimethylamino)propyl]-3-EDC methiodide <i>N</i> -Ethyl- <i>N'</i> -(3-dimethylaminopropyl)carbodiimide methiodide
CAS Number	22572-40-3
Molecular Formula	C ₉ H ₂₀ N ₃ I
Molecular Weight	297.18

Appearance	White to light yellow solid
Melting Point	92 - 97 °C
Water Content (Karl Fisher)	≤ 0.3%
Assay by titration	≥ 98%
Storage	Store at 2 - 8 °C

For Laboratory Use Only