

# Chem-Impex International, Inc.

---

**Tel:** (630) 766-2112

**E-mail:** sales@chemimpex.com

**Shipping and Correspondence:**

935 Dillon Drive

Wood Dale, IL 60191

**Fax:** (630) 766-2218

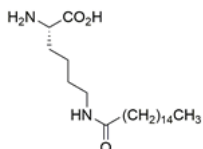
**Web site:** www.chemimpex.com

**Manufacturing site:**

825 Dillon Drive

Wood Dale, IL 60191

---



## Product Specifications

<b>Catalogue Number</b>	33452
<b>Product</b>	<b>N<sup>ε</sup>-Palmitoyl-L-lysine</b> H-L-Lys(Palm)-OH N <sup>ε</sup> -Palmitoyl-L-lysine
<b>CAS Number</b>	59012-43-0
<b>Molecular Formula</b>	C <sub>22</sub> H <sub>44</sub> N <sub>2</sub> O <sub>3</sub>
<b>Molecular Weight</b>	384.6

---

<b>Appearance</b>	White crystalline powder
<b>Melting Point</b>	244 - 248 °C (Dec.)
<b>Assay by titration</b>	≥ 98.5%
<b>D-Enantiomer</b>	≤ 0.3%
<b>Purity by TLC</b>	≥ 98%
<b>Chiral Purity</b>	≥ 99.7% (ee)
<b>Storage</b>	Store at 2 - 8 °C

**For Laboratory Use Only**