

# Chem-Impex International, Inc.

---

**Tel:** (630) 766-2112

**E-mail:** sales@chemimpex.com

**Shipping and Correspondence:**

935 Dillon Drive

Wood Dale, IL 60191

**Fax:** (630) 766-2218

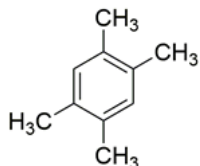
**Web site:** www.chemimpex.com

**Manufacturing site:**

825 Dillon Drive

Wood Dale, IL 60191

---



## Product Specifications

<b>Catalogue Number</b>	33440
<b>Product</b>	<b>1,2,4,5-Tetramethylbenzene</b> Durene
<b>CAS Number</b>	95-93-2
<b>Molecular Formula</b>	C <sub>10</sub> H <sub>14</sub>
<b>Molecular Weight</b>	134.22

---

<b>Appearance</b>	White to off-white crystalline chunks
<b><sup>1</sup>H NMR</b>	Conforms to structure
<b>Purity by GC</b>	≥ 95%
<b>Storage</b>	Store at RT
<b>Additional Information</b>	Crystal point : > 76 °C Naphthalene content : ≤ 0.05%

**For Laboratory Use Only**