

# Chem-Impex International, Inc.

---

**Tel:** (630) 766-2112

**E-mail:** sales@chemimpex.com

**Shipping and Correspondence:**

935 Dillon Drive

Wood Dale, IL 60191

**Fax:** (630) 766-2218

**Web site:** www.chemimpex.com

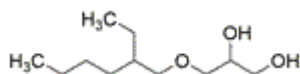
**Manufacturing site:**

825 Dillon Drive

Wood Dale, IL 60191

---

## Product Specifications



<b>Catalogue Number</b>	33416
<b>Product</b>	<b>3-(2-Ethylhexyloxy)-1,2-propanediol</b> Glycerol $\alpha$ -(2-ethylhexyl) ether Ethylhexylglycerin
<b>CAS Number</b>	70445-33-9
<b>Molecular Formula</b>	C <sub>11</sub> H <sub>24</sub> O <sub>3</sub>
<b>Molecular Weight</b>	204.31

---

<b>Appearance</b>	Clear liquid
<b>Color (APHA)</b>	$\leq 20$
<b>Odor</b>	Neutral
<b>Density</b>	0.95 - 0.97
<b>Refractive Index</b>	1.449 - 1.453
<b>Water Content (Karl Fisher)</b>	$\leq 0.2\%$
<b>Purity by GC</b>	$\geq 99\%$
<b>Storage</b>	Store at RT

**For Laboratory Use Only**