

Chem-Impex International, Inc.

Tel: (630) 766-2112

E-mail: sales@chemimpex.com

Shipping and Correspondence:

935 Dillon Drive

Wood Dale, IL 60191

Fax: (630) 766-2218

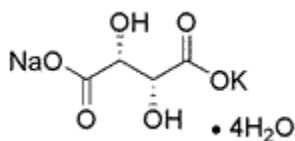
Web site: www.chemimpex.com

Manufacturing site:

825 Dillon Drive

Wood Dale, IL 60191

Product Specifications



Catalogue Number	33364
Product	Potassium sodium tartrate tetrahydrate
	Rochelle salt
	Seignette salt
CAS Number	6381-59-5
Molecular Formula	C ₄ H ₄ KNaO ₆ •4H ₂ O
Molecular Weight	282.2

Appearance	White crystalline powder
Melting Point	75 °C (Approx.)
Heavy Metals	≤ 5 ppm (as Pb)
Anion	Chloride (Cl ⁻): ≤ 0.001% Phosphate (PO ₄ ³⁻): ≤ 0.002%
Cation	Ammonium (NH ₄): ≤ 0.002% Calcium (Ca): ≤ 0.005%
Assay by titration	99.0-102.0%
Application	Constituent of Fehling's solution
Storage	Store at RT

For Laboratory Use Only