

# Chem-Impex International, Inc.

---

Tel: (630) 766-2112

E-mail: sales@chemimpex.com

Shipping and Correspondence:

935 Dillon Drive

Wood Dale, IL 60191

Fax: (630) 766-2218

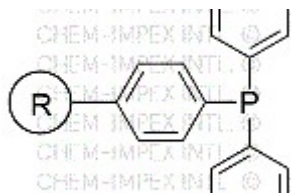
Web site: www.chemimpex.com

Manufacturing site:

825 Dillon Drive

Wood Dale, IL 60191

---



## Product Specifications

<b>Catalogue Number</b>	33328
<b>Product</b>	<b>Triphenylphosphine resin (0.3-1.5 mmol/g , 200-400 mesh)</b>
<b>CAS Number</b>	39319-11-4
<hr/>	
<b>Appearance</b>	White beads
<b>Swelling in DMF</b>	7.6 mL/g
<b>Infrared Spectrum</b>	Conforms to structure
<b>Mesh Size</b>	200 - 400 mesh
<b>Substitution (meq/g)</b>	0.3 - 1.5 mmol/g
<b>% DVB</b>	1% DVB
<b>Storage</b>	Store at 0 - 8 °C

**For Laboratory Use Only**