

# Chem-Impex International, Inc.

---

**Tel:** (630) 766-2112

**E-mail:** sales@chemimpex.com

**Shipping and Correspondence:**

935 Dillon Drive

Wood Dale, IL 60191

**Fax:** (630) 766-2218

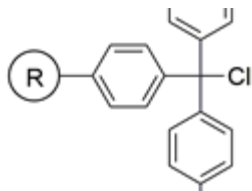
**Web site:** www.chemimpex.com

**Manufacturing site:**

825 Dillon Drive

Wood Dale, IL 60191

---



## Product Specifications

**Catalogue Number** 33326

**Product** **4-Methoxytrityl chloride resin**  
**(1.0-1.6 mmol/g, 100-200 mesh)**

---

<b>Appearance</b>	Yellow beads
<b>Kaiser Test</b>	Negative
<b>Infrared Spectrum</b>	Conforms to structure
<b>Loss on Drying</b>	≤ 2%
<b>Mesh Size</b>	100 - 200 mesh
<b>Substitution (meq/g)</b>	1.0 - 1.6 mmol/g
<b>% DVB</b>	2% DVB
<b>Storage</b>	Store at 2 - 8 °C

**For Laboratory Use Only**