

# Chem-Impex International, Inc.

---

**Tel:** (630) 766-2112

**E-mail:** sales@chemimpex.com

**Shipping and Correspondence:**

935 Dillon Drive

Wood Dale, IL 60191

**Fax:** (630) 766-2218

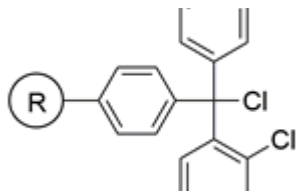
**Web site:** www.chemimpex.com

**Manufacturing site:**

825 Dillon Drive

Wood Dale, IL 60191

---



## Product Specifications

<b>Catalogue Number</b>	33312
<b>Product</b>	<b>2-Chlorotrityl chloride resin</b>
<b>CAS Number</b>	42074-68-0

---

<b>Appearance</b>	Yellow beads
<b>Swelling in DCM</b>	4 - 8 mL/g
<b>Swelling in DMF</b>	3 - 6 mL/g
<b>Kaiser Test</b>	Negative
<b>Infrared Spectrum</b>	Conforms to structure
<b>Loss on Drying</b>	≤ 2% (5h, 40 ± 1 °C in vacuum oven)
<b>Mesh Size</b>	200 - 400 mesh
<b>Substitution (meq/g)</b>	0.4 - 0.8 mmol/g
<b>% DVB</b>	1% DVB
<b>Storage</b>	Store at 2 - 8 °C

**For Laboratory Use Only**