

# Chem-Impex International, Inc.

---

**Tel:** (630) 766-2112

**E-mail:** sales@chemimpex.com

**Shipping and Correspondence:**

935 Dillon Drive

Wood Dale, IL 60191

**Fax:** (630) 766-2218

**Web site:** www.chemimpex.com

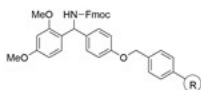
**Manufacturing site:**

825 Dillon Drive

Wood Dale, IL 60191

---

## Product Specifications



<b>Catalogue Number</b>	33294
<b>Product</b>	<b>4-(2', 4'-Dimethoxyphenyl-Fmoc-aminomethyl)-phenoxy resin (0.6-1.0 mmol/g, 100-200 mesh)</b>
	Rink amide resin

---

<b>Appearance</b>	Pale white or slight yellow beads
<b>Swelling in DCM</b>	4.5 - 8.5 mL/g
<b>Swelling in DMF</b>	4 - 7 mL/g
<b>Kaiser Test</b>	Negative
<b>Infrared Spectrum</b>	Conforms to structure
<b>Loss on Drying</b>	≤ 2% (40 ± 1 °C, 5h in vacuum)
<b>Mesh Size</b>	100 - 200 mesh
<b>Substitution (meq/g)</b>	0.6 - 1.0 mmol/g
<b>% DVB</b>	1% DVB
<b>Storage</b>	Store at 2 - 8 °C

**For Laboratory Use Only**