

Chem-Impex International, Inc.

Tel: (630) 766-2112

E-mail: sales@chemimpex.com

Shipping and Correspondence:

935 Dillon Drive

Wood Dale, IL 60191

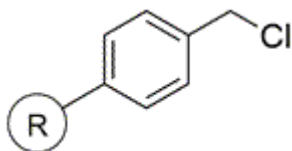
Fax: (630) 766-2218

Web site: www.chemimpex.com

Manufacturing site:

825 Dillon Drive

Wood Dale, IL 60191



Product Specifications

Catalogue Number	33277
Product	Chloromethylated polystyrene
CAS Number	55844-94-5

Appearance	Pale to yellow beads
Infrared Spectrum	Conforms to structure
Loss on Drying	≤ 2% (105 ± 3 °C, 1.5 h in oven)
Mesh Size	30 - 70 mesh
Substitution (meq/g)	2.0 - 4.5 mmol/g
% DVB	2% DVB
Storage	Store at 2 - 8 °C

For Laboratory Use Only