

# Chem-Impex International, Inc.

---

**Tel:** (630) 766-2112

**E-mail:** sales@chemimpex.com

**Shipping and Correspondence:**

935 Dillon Drive

Wood Dale, IL 60191

**Fax:** (630) 766-2218

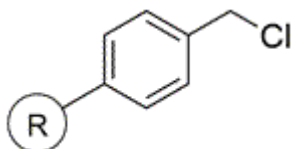
**Web site:** www.chemimpex.com

**Manufacturing site:**

825 Dillon Drive

Wood Dale, IL 60191

---



## Product Specifications

<b>Catalogue Number</b>	33274
<b>Product</b>	<b>Chloromethylated polystyrene</b>
<b>CAS Number</b>	55844-94-5

---

<b>Appearance</b>	Pale or yellow beads
<b>Infrared Spectrum</b>	Conforms to structure
<b>Loss on Drying</b>	≤ 2% (105 ± 3 °C, 1.5 h in oven)
<b>Mesh Size</b>	70 - 100 mesh
<b>Substitution (meq/g)</b>	0.6 - 2.0 mmol/g
<b>% DVB</b>	2% DVB
<b>Storage</b>	Store at 2 - 8 °C

**For Laboratory Use Only**