

Chem-Impex International, Inc.

Tel: (630) 766-2112

E-mail: sales@chemimpex.com

Shipping and Correspondence:

935 Dillon Drive

Wood Dale, IL 60191

Fax: (630) 766-2218

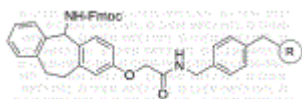
Web site: www.chemimpex.com

Manufacturing site:

825 Dillon Drive

Wood Dale, IL 60191

Product Specifications



Catalogue Number 33249

Product **Ramage amide-AM resin**

Tricyclic amide-AM resin

Appearance Pale to yellow beads

Kaiser Test Negative

Infrared Spectrum Conforms to structure

Mesh Size 200 - 400 mesh

Substitution (meq/g) 0.4 - 0.8 mmol/g

% DVB 1% DVB

Storage Store at 2 - 8 °C

For Laboratory Use Only