

# Chem-Impex International, Inc.

---

**Tel:** (630) 766-2112

**E-mail:** sales@chemimpex.com

**Shipping and Correspondence:**

935 Dillon Drive

Wood Dale, IL 60191

**Fax:** (630) 766-2218

**Web site:** www.chemimpex.com

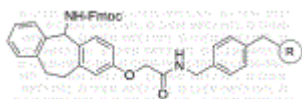
**Manufacturing site:**

825 Dillon Drive

Wood Dale, IL 60191

---

## Product Specifications



---

|                         |                              |
|-------------------------|------------------------------|
| <b>Catalogue Number</b> | 33248                        |
| <b>Product</b>          | <b>Ramage amide-AM resin</b> |
|                         | Tricyclic amide-AM resin     |

---

|                             |  |
|-----------------------------|--|
| <b>Appearance</b>           | Pale to yellow beads                   |
| <b>Kaiser Test</b>          | Negative                               |
| <b>Infrared Spectrum</b>    | Conforms to structure                  |
| <b>Loss on Drying</b>       | ≤ 2% (5 h in vacuum oven at 40 ± 1 °C) |
| <b>Mesh Size</b>            | 100 - 200 mesh                         |
| <b>Substitution (meq/g)</b> | 0.5 - 0.8 mmol/g                       |
| <b>% DVB</b>                | 1% DVB                                 |
| <b>Storage</b>              | Store at 2 - 8 °C                      |

**For Laboratory Use Only**