

Chem-Impex International, Inc.

Tel: (630) 766-2112

E-mail: sales@chemimpex.com

Shipping and Correspondence:

935 Dillon Drive

Wood Dale, IL 60191

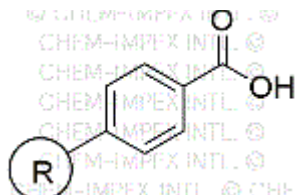
Fax: (630) 766-2218

Web site: www.chemimpex.com

Manufacturing site:

825 Dillon Drive

Wood Dale, IL 60191



Product Specifications

Catalogue Number	33219
Product	Carboxylic resin (0.8-2.5 mmol/g, 200-400 mesh)

Appearance	Off-white to beige beads
Infrared Spectrum	Conforms to structure
Loss on Drying	≤ 2%
Mesh Size	200 - 400 mesh
Substitution (meq/g)	0.8 - 2.5 mmol/g
% DVB	2% DVB
Storage	Store at 2 - 8 °C

For Laboratory Use Only