

# Chem-Impex International, Inc.

---

**Tel:** (630) 766-2112

**E-mail:** sales@chemimpex.com

**Shipping and Correspondence:**

935 Dillon Drive

Wood Dale, IL 60191

**Fax:** (630) 766-2218

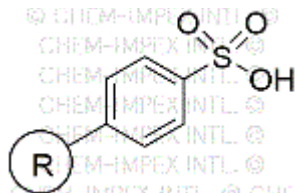
**Web site:** www.chemimpex.com

**Manufacturing site:**

825 Dillon Drive

Wood Dale, IL 60191

---



## Product Specifications

---

**Catalogue Number** 33188

**Product** **Sulfonic acid resin (1.0-2.0 mmol/g , 100-200 mesh)**

---

**Appearance** Brown beads

**Infrared Spectrum** Conforms to structure

**Loss on Drying**  $\leq 2\%$  (5 h in vacuum oven at  $40 \pm 1$  °C)

**Mesh Size** 100 - 200 mesh

**Substitution (meq/g)** 1.0 - 2.0 mmol/g

**% DVB** 2% DVB

**Storage** Store at 2 - 8 °C

**For Laboratory Use Only**