

# Chem-Impex International, Inc.

---

**Tel:** (630) 766-2112

**E-mail:** sales@chemimpex.com

**Shipping and Correspondence:**

935 Dillon Drive

Wood Dale, IL 60191

**Fax:** (630) 766-2218

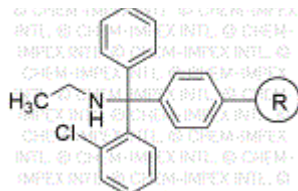
**Web site:** www.chemimpex.com

**Manufacturing site:**

825 Dillon Drive

Wood Dale, IL 60191

---



## Product Specifications

**Catalogue Number** 33170

**Product** **Ethylamine 2-chlorotriptyl resin**

---

**Appearance** Yellow beads

**Mesh Size** 100 - 200 mesh

**Substitution (meq/g)** 0.3 - 1.2 mmol/g (Elemental analysis)

**% DVB** 1% DVB

**Storage** Store at 2 - 8 °C

**For Laboratory Use Only**