

# Chem-Impex International, Inc.

---

**Tel:** (630) 766-2112

**E-mail:** sales@chemimpex.com

**Shipping and Correspondence:**

935 Dillon Drive

Wood Dale, IL 60191

**Fax:** (630) 766-2218

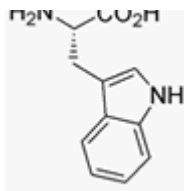
**Web site:** www.chemimpex.com

**Manufacturing site:**

825 Dillon Drive

Wood Dale, IL 60191

---



## Product Specifications

<b>Catalogue Number</b>	33068
<b>Product</b>	<b>L-Tryptophan , from non-animal origin</b> L-Trp-OH (S)-2-Amino-3-(3-indolyl)propionic acid
<b>CAS Number</b>	73-22-3
<b>Molecular Formula</b>	C <sub>11</sub> H <sub>12</sub> N <sub>2</sub> O <sub>2</sub>
<b>Molecular Weight</b>	204.2

---

<b>Appearance</b>	White to off-white crystalline powder
<b>Heavy Metals</b>	≤ 10 ppm
<b>Anion</b>	Chloride : ≤ 0.020% Sulfate : ≤ 0.020%
<b>Cation</b>	Ammonium : ≤ 0.02% Iron : ≤ 10 ppm Arsenic : ≤ 1 ppm
<b>pH</b>	5.5 - 6.4
<b>Mould and Yeast</b>	≤ 10 cfu/g
<b>Optical Rotation</b>	[α] <sub>D</sub> <sup>20</sup> = -30.5 to -32.5 ° [α] <sub>D</sub> <sup>25</sup> = -29.4 to -32.8 °
<b>Loss on Drying</b>	≤ 0.20%
<b>Endotoxin Test</b>	≤ 6.0 EU/g
<b>Microbial Count</b>	≤ 100 cfu/g
<b>Related Substances</b>	≤ 100 ppm
<b>Residue On Ignition</b>	≤ 0.10%
<b>Assay</b>	≥ 99%
<b>Grade</b>	EP, JP, USP
<b>Storage</b>	Store at RT

# *Product Specifications*

Catalog Number: 33068

---

**For Laboratory Use Only**