

Chem-Impex International, Inc.

Tel: (630) 766-2112

E-mail: sales@chemimpex.com

Shipping and Correspondence:

935 Dillon Drive

Wood Dale, IL 60191

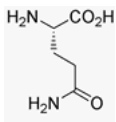
Fax: (630) 766-2218

Web site: www.chemimpex.com

Manufacturing site:

825 Dillon Drive

Wood Dale, IL 60191



Product Specifications

Catalogue Number	33066
Product	L-Glutamine, from non-animal origin L-Gln-OH (S)-2,5-Diamino-5-oxopentanoic acid
CAS Number	56-85-9
Molecular Formula	C ₅ H ₁₀ N ₂ O ₃
Molecular Weight	146.15
<hr/>	
Appearance	White crystalline powder
Heavy Metals	≤ 5 ppm
Anion	Chloride : ≤ 0.02% Sulfate : ≤ 0.02%
Cation	Iron : ≤ 10 ppm Lead : ≤ 5 ppm Arsenic : ≤ 1 ppm
pH	4 - 6
Yeast and Mold	≤ 100 cfu/g
Optical Rotation	[α] _D ²⁰ = +6.3 to +7.3 °
Loss on Drying	≤ 0.20%
Coliform Organisms	Negative
Endotoxin Test	≤ 40 EU/g
Microbial Count	≤ 1000 cfu/g
Insoluble material	Conforms
Other Amino Acids	≤ 0.5%
Residue On Ignition	≤ 0.10
Assay by titration	99 - 101%
Grade	meets USP, EP, JP testing specifications, suitable for cell culture
Storage	Store at RT
Additional Information	State of solution: ≥ 98.0%

Product Specifications

Catalog Number: 33066

For Laboratory Use Only