

Chem-Impex International, Inc.

Tel: (630) 766-2112

E-mail: sales@chemimpex.com

Shipping and Correspondence:

935 Dillon Drive

Wood Dale, IL 60191

Fax: (630) 766-2218

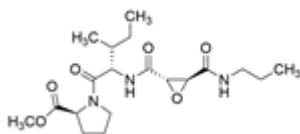
Web site: www.chemimpex.com

Manufacturing site:

825 Dillon Drive

Wood Dale, IL 60191

Product Specifications



Catalogue Number	32964
Product	L-trans-Epoxy succinyl-Ile-Pro-OMe L-trans-Epoxy succinyl(propylamide)-Ile-Pro-OMe N-(L-3-trans-(Propylamino)carbonyl)-oxirane-2-carbonyl)-Ile-Pro-OMe
CAS Number	147859-80-1
Molecular Formula	C ₁₉ H ₃₁ N ₃ O ₆
Molecular Weight	397.47

Appearance	White to off-white powder
Purity by HPLC	≥ 99%
ESI-MS	Theoretical M.W. : 397 ± 1
Storage	Store at ≤ -10 °C

For Laboratory Use Only